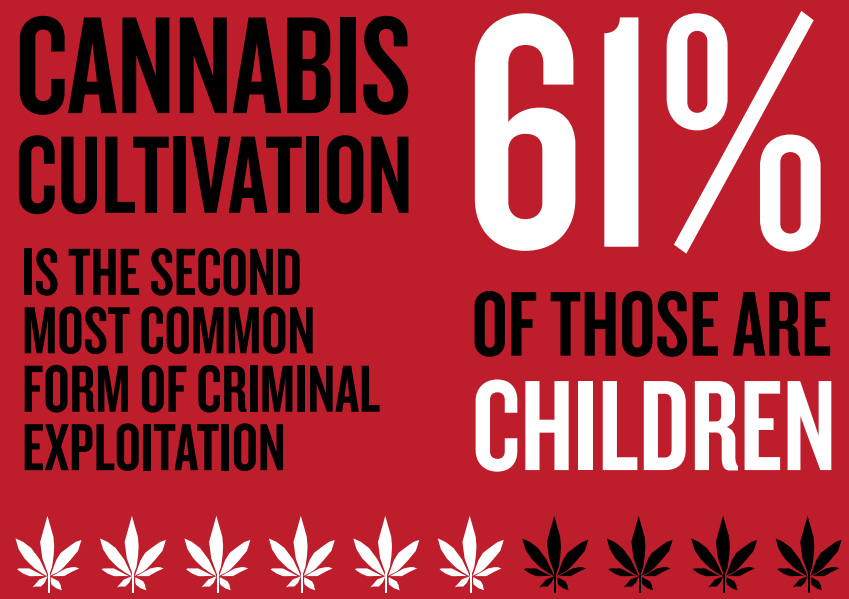
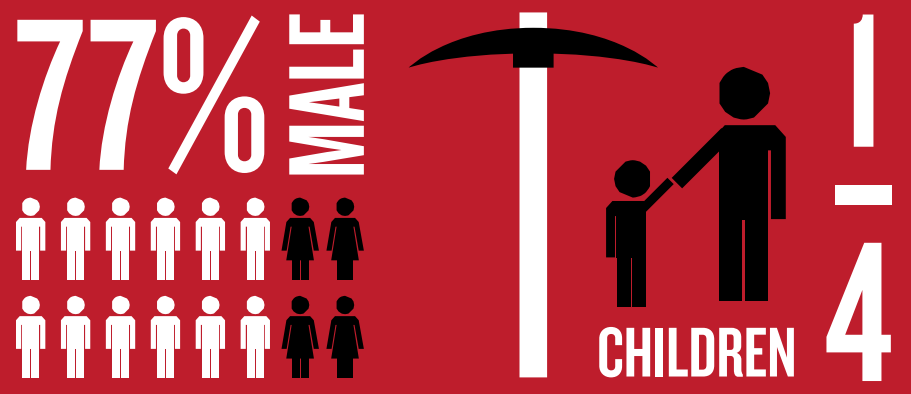
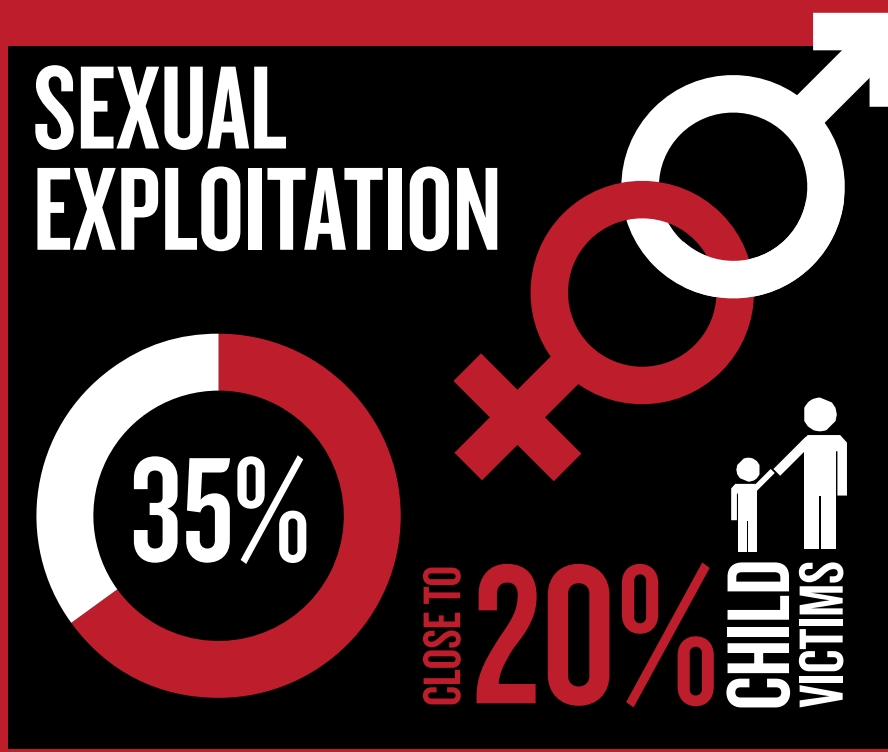


# HELP FREE THE UK FROM MODERN SLAVERY

Modern Slavery is the illegal exploitation of people for personal or commercial gain. Victims\* are trapped in servitude, which they were deceived or coerced into, and feel they cannot leave.

## MODERN SLAVERY INCLUDES:



## WHERE VICTIMS COMMONLY COME FROM



Slavery is closer than you think. It happens all over the world including the UK. Find out more at [modernslavery.co.uk](http://modernslavery.co.uk) or to seek help or report slavery call the helpline.

0800 0121 700

Calls are free from landlines and most mobile networks

Figures are drawn from National Referral mechanism statistics 2014. Common areas of labour exploitation and criminal exploitation information taken from NCA Strategic Assessment on the Nature and Scale of Human Trafficking 2013. \*victims' referred to above are potential victims identified and referred to the National Referral Mechanism, who are then subject to fuller assessment.